

Flash Upgrading the Premier Elite Series

Introduction

This document describes how to flash upgrade the **Premier Elite Series** control panels.



NOTE This programme **IS NOT** compatible with non-Elite Premier panels.



NOTE This programme will **NOT** update the **Ricochet®** expander firmware on -W panels.

1. Equipment

In order to flash upgrade the control panel the following items are required:

- Flash Interface PCB
- USB-Com JAC-0001
- PC and **Premier Elite** Flasher software
- Flash data file
- **Wintex™** UDL Software (V6.2.5.0 or later)



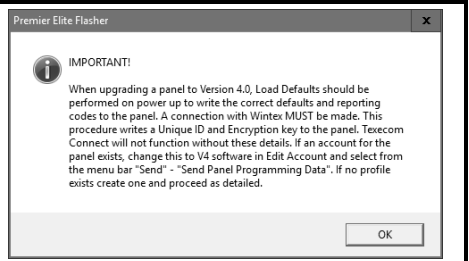
NOTE The latest firmware files are packaged with the programme. Please check our website for updated firmware files, or Email customersupport@texe.com and request the firmware file (Please specify panel type and existing firmware version).



NOTE If a PC-Com JAA-0001 is being used an alternative version of Flasher software is required. Please contact Technical Support to obtain the required software.

2. IMPORTANT Flashing to V4

Premier Elite V4 firmware contains several new features making the Elite series of panels **Texecom Connect 'Ready'**. A key feature and requirement to enable Texecom Connect is a Unique ID (GUID) code which **MUST** be in the control panel for Connect to work. This Unique ID is written to the panel by **Wintex**, it is therefore critical that following a flash upgrade, Load Defaults is completed, and the panel is connected to with **Wintex**. The Unique ID can be viewed in Engineer Utilities following completion of this procedure.



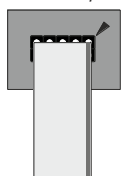
3. Preparation

It is **HIGHLY** recommended that you use Wintex UDL to upload and save all control panel data **BEFORE** flashing the control panel.

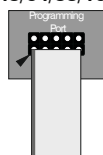
4. Connections

Remove power from the control panel and connect the Flash interface to the control panel and PC as shown:

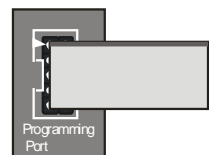
Elite 12/24

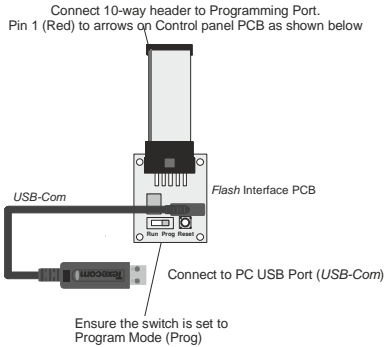


Elite
48/64/88/168



Elite 640



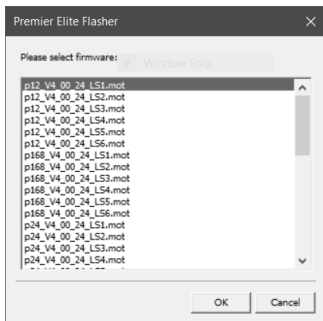


Re-apply power to the control panel and press the **RESET** button on the Premier Flash Interface board.

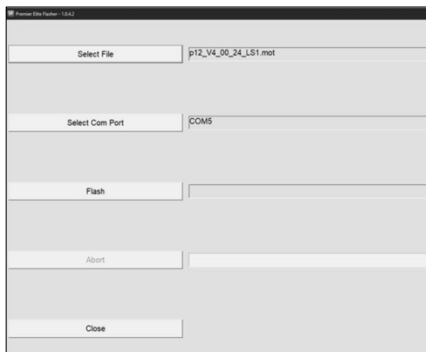
5. Flashing the Control Panel

Ensure that the *Flash Interface* is connected to the control panel and PC as shown previously.

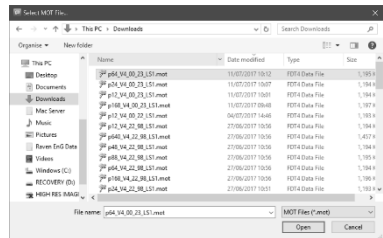
1. If you have anything connected to the control panel COM Ports, you **MUST UNPLUG** them.
2. Run the *Premier Elite Flasher* software on the PC, the following screen will appear:



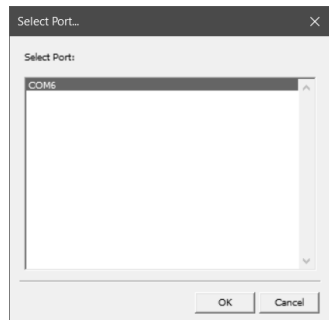
3. Choose which panel and firmware version you wish to use. If the version number you wish to use is later than the one listed, just click on the correct panel type. You will be presented with the following screen.



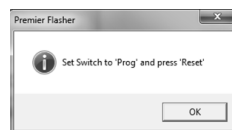
4. To change the firmware file being used click on select, you will be presented with the following screen



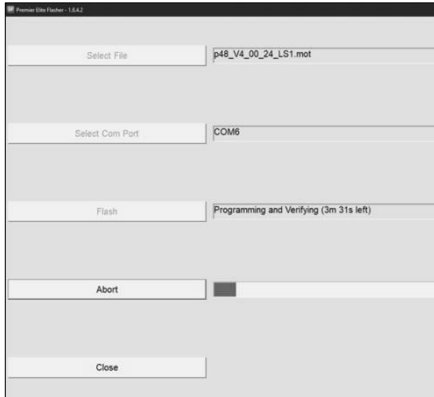
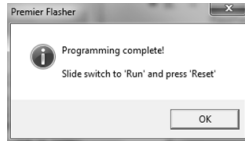
5. Browse to file you want to use and click open.
6. Click on Select Com Port, and enter the com port number that you're USB-Com is connected too; press **OK**



7. Press the Flash Button



- Set the switch to "Prog" and press "Reset" on the flasher interface



- Move the switch from "Prog" to "Run" and press "Reset", press OK.
- Carefully unplug the 10 way header from the control panel.
- Loading Defaults
 - If the firmware is a Minor Upgrade, going from say V2.10 to V2.50 then the panel will not need defaulting.
 - If the firmware is a Major Upgrade, say from V3.XX to V4.XX then panel defaults will need to be loaded. You **MUST** power down the control panel and perform a "Factory Reset" to ensure that all defaults are loaded correctly.
- The control panel should now have the new software in it. If you press Menu then 4 on a remote keypad it will display the control panel type and software version.


- When complete the following will appear

6. Using Wintex™ to Update New Options

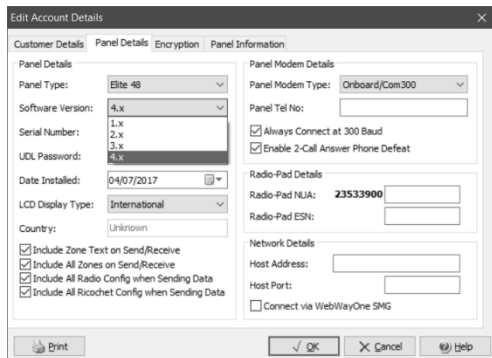
If as recommended, you uploaded the profile data into **Wintex™** before flashing the control panel, the following procedure will ensure that all new features will be set to their default settings:

- Open the account profile of the control panel that you have just flash updated.



- Click on the  button.

- Select the "Panel Details" tab:

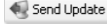


- Click on the "Software Version" drop-down box and select the version that matches the version you used to flash the control panel.
- Click OK, Wintex will automatically update any new options to their default settings.



- Click on the  button to connect to the control panel using **USB-Com**.



- Click on the  button to update the new options in the control panel.

Texecom

Texecom Limited, Bradwood Court, St. Crispin Way, Haslingden, Lancashire
BB4 4PW, England.

Technical Support:

UK Customers Tel: 08456 300 600

(Calls charged at 3.36 pence per minute from a BT landline. Calls from other networks may vary.)

International Customers Tel: +44 1706 233875

Email: techsupport@texe.com

© Texecom Limited 2017

INS552-4

